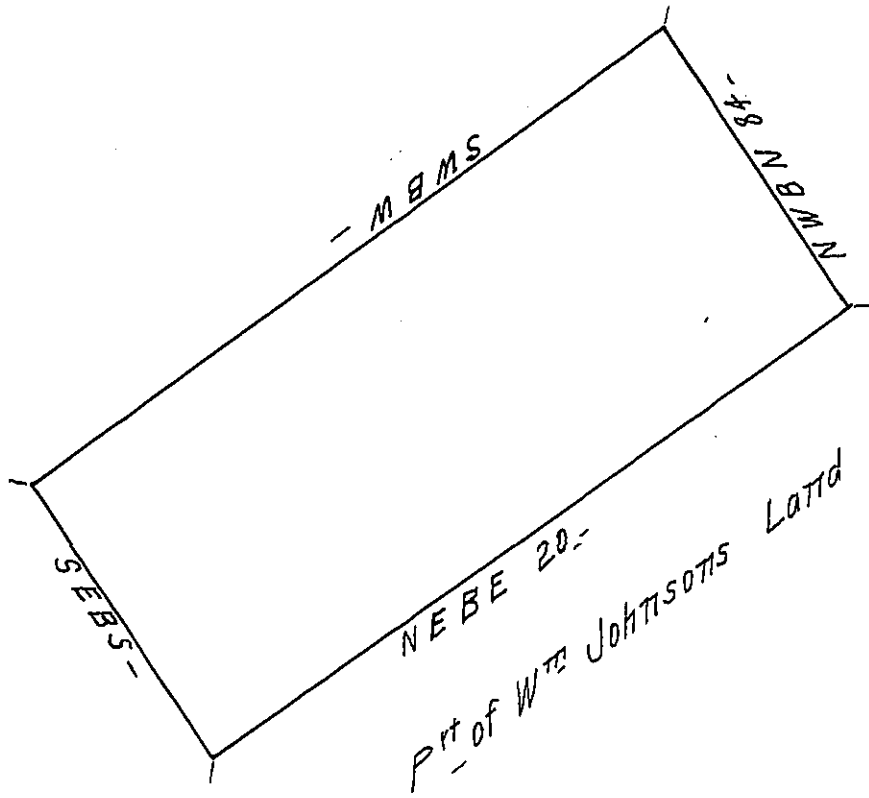


200
84
1600
16800 / 105
16 16



April the 11: 1884

Surveyed for Latchlot Loyd 100 acres of Land lying between chestor creek and ridly creek beginning at a marked red oak and running NE b E 200 perch along Wm Johnsons line of marked trees to a marked post from thence NW b N 84 perch to a marked white oak from thence SW b W 200 perch to a marked red oak and from thence SE b S 84 perch to the first marked tree

p Charles Ashcott

IN TESTIMONY that the above is a copy of the original remaining on file in the Department of Internal Affairs of Pennsylvania, made conformably to an Act of Assembly approved the 16th day of February, 1833, I have hereunto set my Hand and caused the Seal of said Department to be affixed at Harrisburg, this Fourteenth day of May 1909

Henry Horvath
Secretary of Internal Affairs.